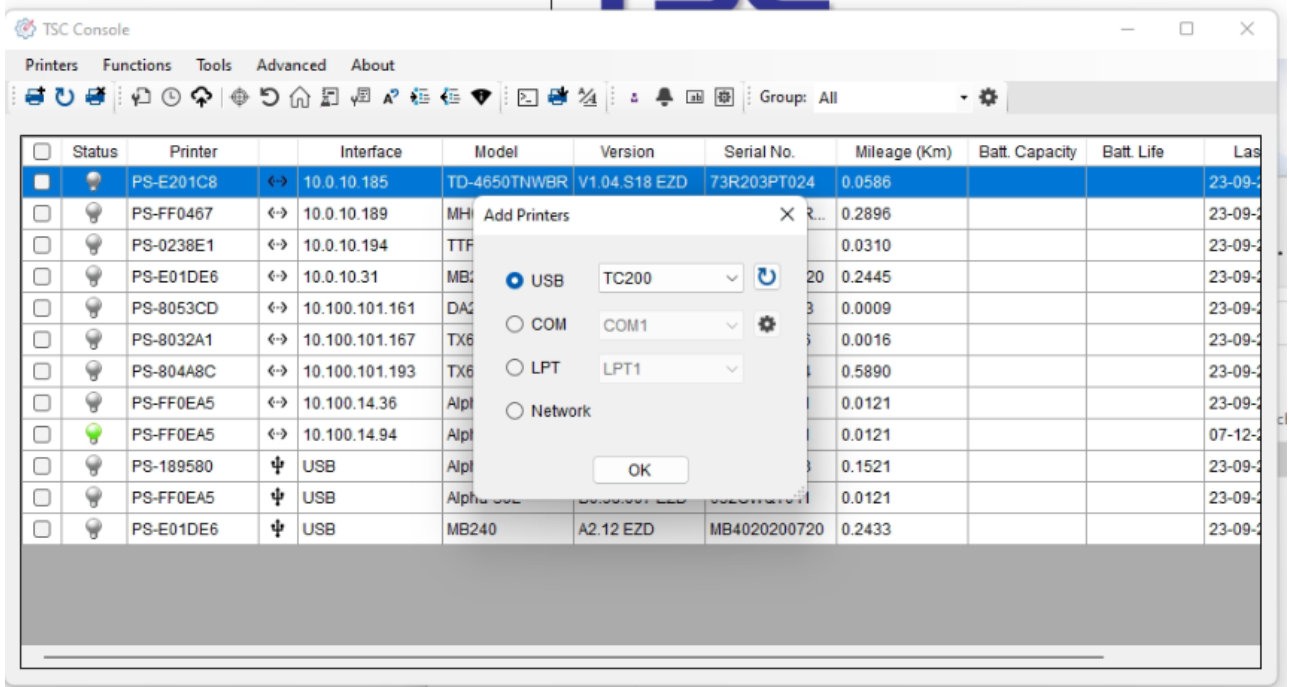
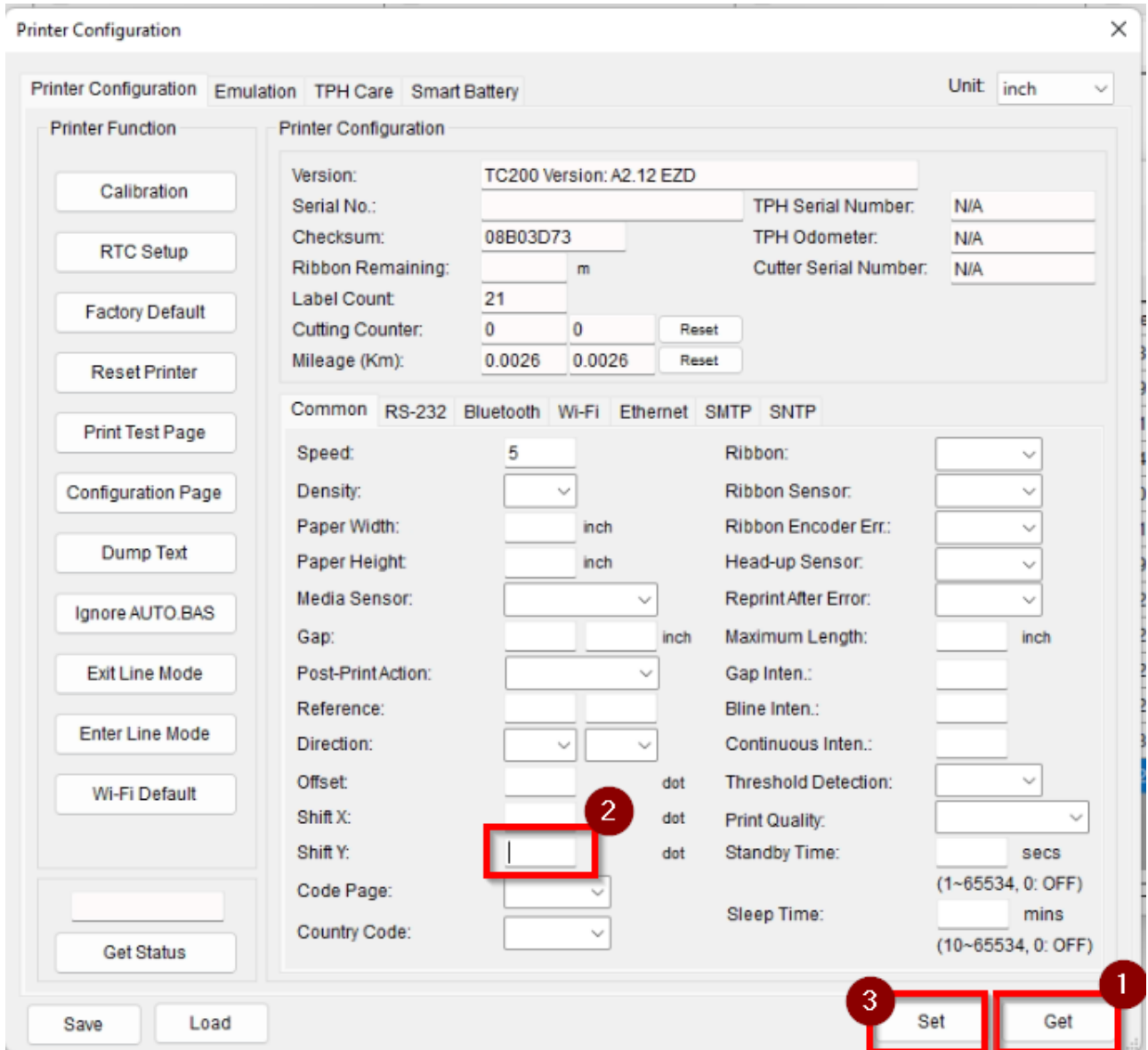


# Calibration imprimante TSC

1. Printer → Add printer
2. Double click sur l'imprimante





3. -25 comme valeur pour Y

From: <https://wiki.makeitsimple.be/> - makeITsimple wiki

Permanent link: <https://wiki.makeitsimple.be/doku.php?id=windows:imprimantetsc>

Last update: 2022/09/23 16:48

